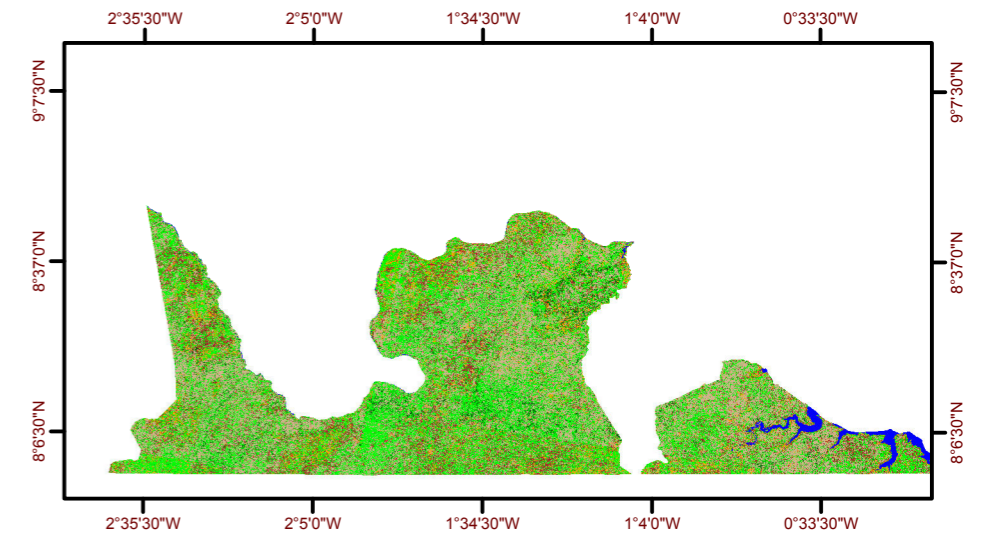
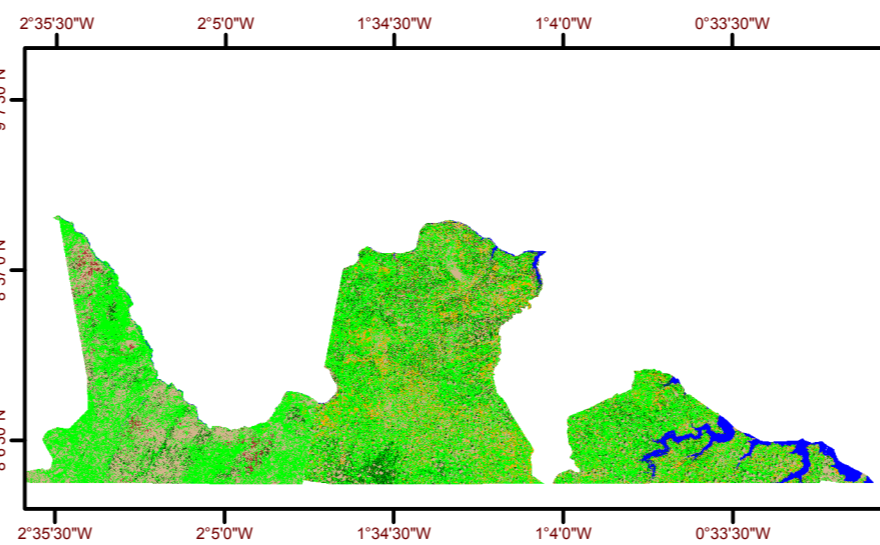
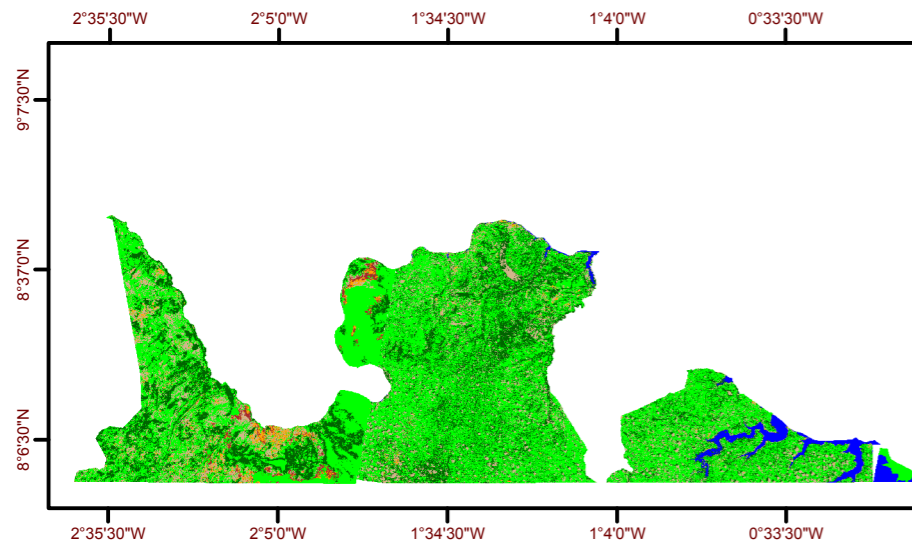


1990

2000

2010



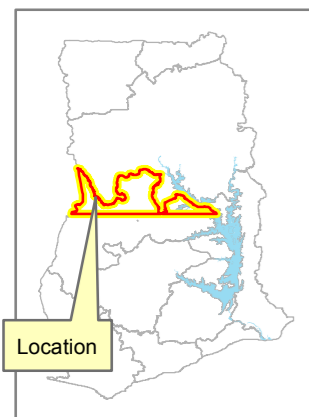
Class	Ha	Sq Km
Closed savanna wood/very dense herbaceous cover	274658.6	2746.586
Open savanna woodland dense herbaceous cover	611924.5	6119.245
Dense herbaceous/grass cover	148392.6	1483.926
Grass/herbaceous cover	20354.48	203.5448
Bare surface/built up	10330.2	103.302
Water body	28026.35	280.2635

Class	Ha	Sq Km
Closed savanna wood/very dense herbaceous cover	160025.7	1600.257
Open savanna woodland dense herbaceous cover	511290.3	5112.903
Dense herbaceous/grass cover	284647.7	2846.477
Grass/herbaceous cover	94785.76	947.8576
Bare surface/built up	13574.46	135.7446
Water body	29363.11	293.6311






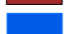
Class	Ha	Sq Km
Closed savanna wood/very dense herbaceous cover	61999.94	619.9994
Open savanna woodland dense herbaceous cover	418124	4181.24
Dense herbaceous/grass cover	385035	3850.35
Grass/herbaceous cover	83299.8	832.998
Bare surface/built up	126050	1260.5
Water body	19177.8	191.778



Location Map



Legend

	Closed savanna woodland/very dense herbaceous cover
	Open savanna woodland dense herbaceous cover
	Dense herbaceous/grass cover
	Grass / herbaceous cover
	Bare surface/ built up
	Water body

Matrix

Project Area in the Brong Ahafo Region matrix of land cover by class values for the years 1990, 2000 and 2010						
Class value	Area of project area in sq.km occupied by a class					
	1990	%	2000	%	2010	%
Closed savanna woodland	2746.59	25.11	1600.26	14.63	620.00	5.67
Open savanna woodland	6119.24	55.95	5112.90	46.75	4181.24	38.23
Dense herbaceous/grass	1483.93	13.57	2846.48	26.03	3850.35	35.21
Grass/herbaceous	203.54	1.86	947.86	8.67	833.00	7.62
Bare surface/built up	103.30	0.94	135.74	1.24	1260.50	11.53
Water body	280.26	2.56	293.63	2.68	191.78	1.75
	10936.87	100	10936.87	100	10936.87	100