



**USAID**  
FROM THE AMERICAN PEOPLE

# District Level Performance: USAID Presence Vs. Impact

## **USAID METSS**

Feed the Future Implementing Partners Meeting

Labadi Hotel Conference

March 22, 2017



**USAID**  
FROM THE AMERICAN PEOPLE

# Outline

- **District Profiles**
  - Introduction & Features
- **USAID PRESENCE & IMPACT by district**
  - Methodology
  - Pairing and Interpretation
- **Findings & Takeaways**
  - Presence vs Impact at the District level
  - Discussion Questions
  - Integration of FINDINGS in decision making



**USAID**  
FROM THE AMERICAN PEOPLE

# District Profile Series

To feed  
your district  
level  
decision  
making

Bridging  
the  
information  
gap

Enabling  
district level  
knowledge



## DISTRICT PROFILES

A SERIES COVERING NORTHERN, UPPER WEST, UPPER EAST  
AND BRONG AHAFO

**TAMALE METROPOLITAN**  
Feed the Future Ghana District Profile Series—Draft (December 2016)

**DISTRICT PROFILE CONTENT**

- 1. Cover Page
- 2. District Profile Data
- 3. Agricultural Data
- 4. Health, Nutrition and Sanitation
- 5. Demographic and Population Data
- 6. District Profile Questions

Summary Statistics: 1.8% (Total Population) / 2.0M (Total Population) / 100 (Total Population)



**TAMALE METROPOLITAN**  
Feed the Future Ghana District Profile Series—Draft (December 2016)

**DISTRICT PROFILE CONTENT**

- 1. Cover Page
- 2. District Profile Data
- 3. Agricultural Data
- 4. Health, Nutrition and Sanitation
- 5. Demographic and Population Data
- 6. District Profile Questions

Summary Statistics: 1.8% (Total Population) / 2.0M (Total Population) / 100 (Total Population)



**CENTRAL GONJA**  
Feed the Future Ghana District Profile Series—Draft (December 2016)

**DISTRICT PROFILE CONTENT**

- 1. Cover Page
- 2. District Profile Data
- 3. Agricultural Data
- 4. Health, Nutrition and Sanitation
- 5. Demographic and Population Data
- 6. District Profile Questions

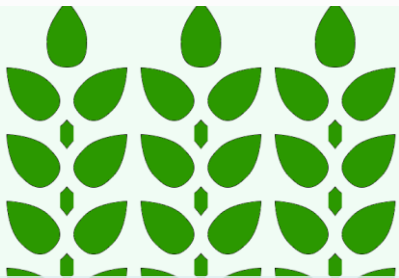
Summary Statistics: 11.5% (Total Population) / 1.1M (Total Population) / 100 (Total Population)



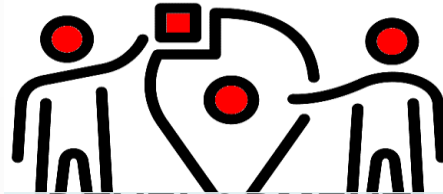


**USAID**  
FROM THE AMERICAN PEOPLE

# CATEGORIES COVERED by DISTRICT PROFILES



Agriculture Data



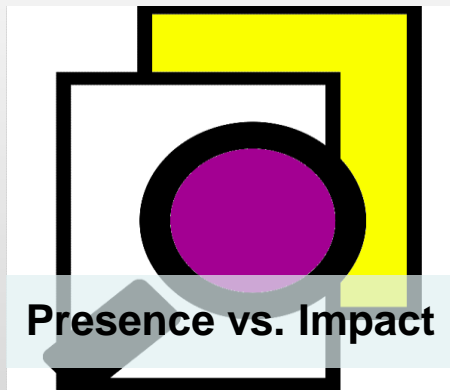
DEVELOPMENT  
WORK



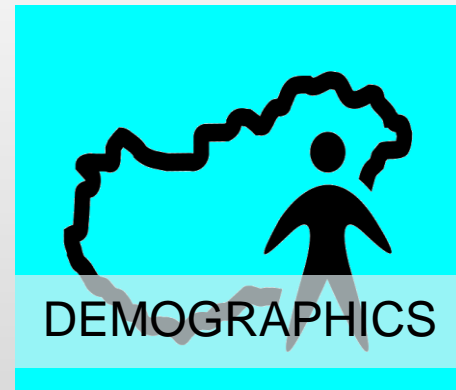
HEALTH



NUTRITION



Presence vs. Impact

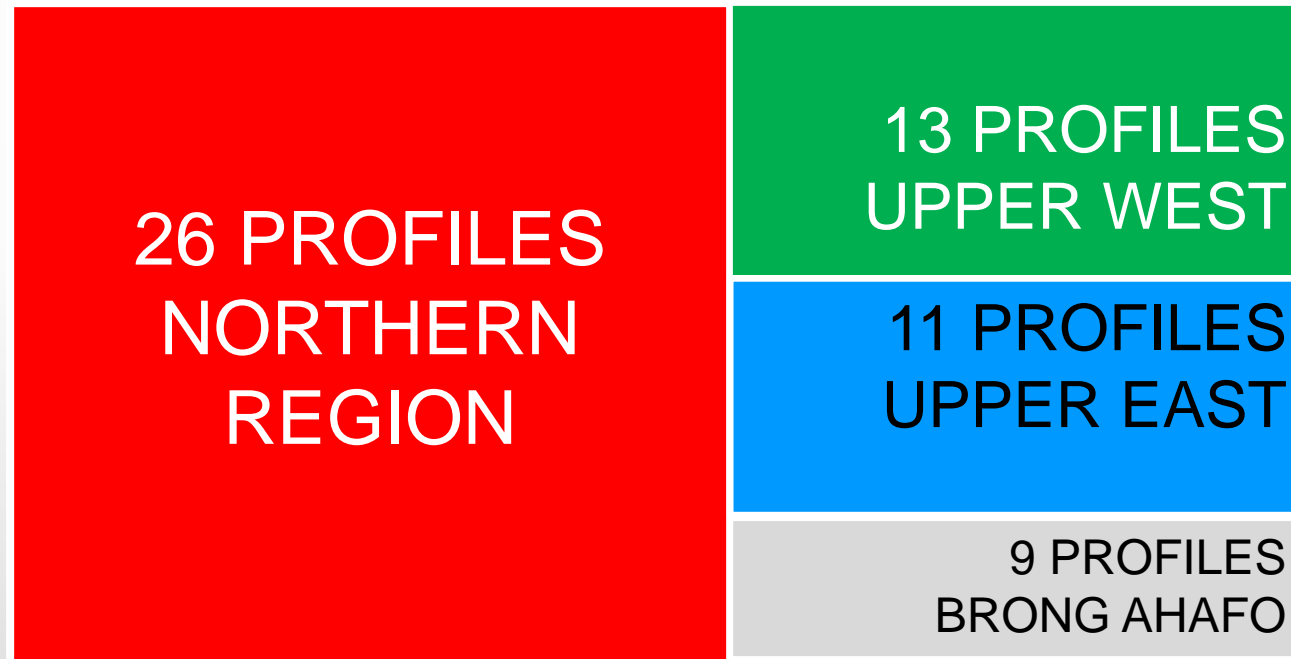


DEMOGRAPHICS



**USAID**  
FROM THE AMERICAN PEOPLE

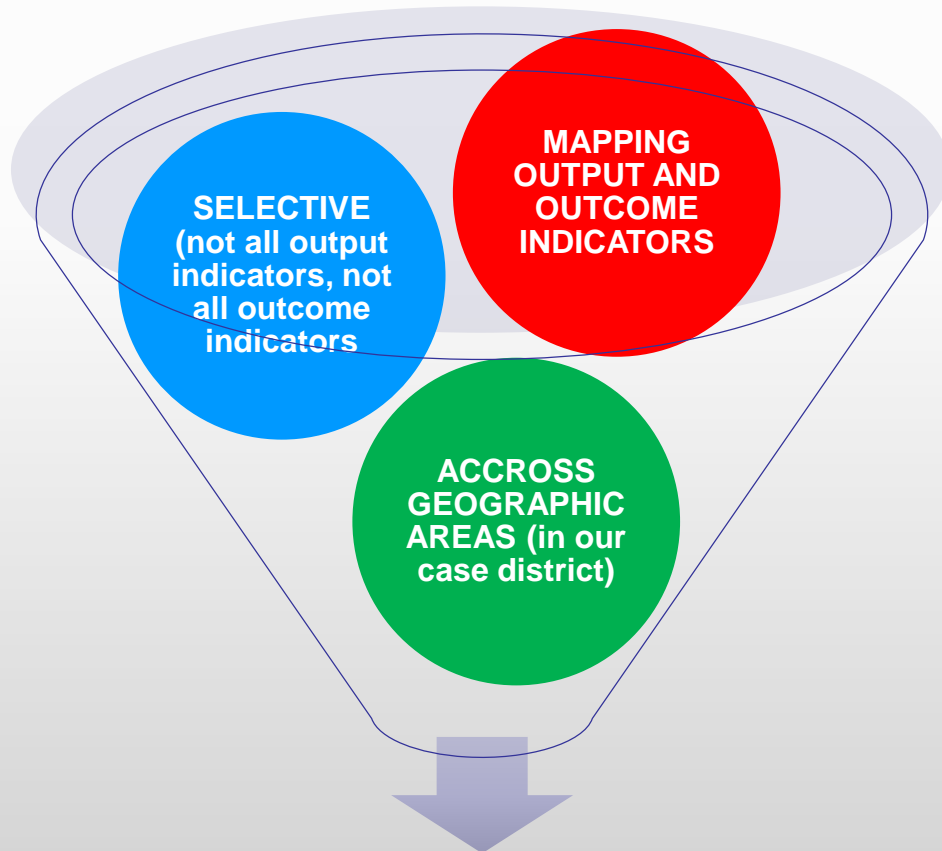
# Geographical Coverage





# LINKING PRESENCE with IMPACT

## HOW?

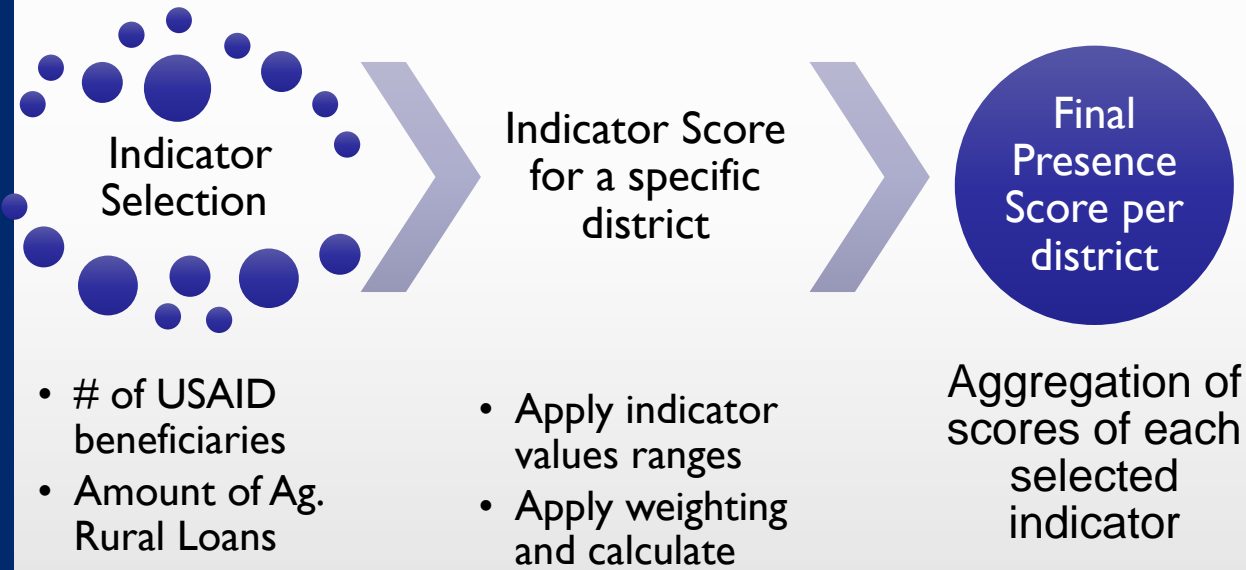


## • WHY?

- **To identify areas of (non) performance between output/presence and outcome/impact indicators**
- **To identify successes and gaps in project and program planning**
- **To raise flags at the district level and enable rapid decision making based on the best data available**



# USAID Presence Scoring Process



## USAID District Presence Score

0	NO USAID DISTRICT PRESENCE
0.1 - 1	LOW USAID DISTRICT PRESENCE
1.1 - 1.9	BELOW AVERAGE USAID DISTRICT PRESENCE
2	AVERAGE USAID DISTRICT PRESENCE
2.1 - 3	ABOVE AVERAGE USAID DISTRICT PRESENCE
3.1 - 4	HIGH USAID DISTRICT PRESENCE

$$USAID\ Presence = [(Score\ Of\ Direct\ Beneficiaries) * 0.6] + [] + [(Score\ of\ Value\ of\ Ag.\ Loans) * 0.4]$$



**USAID**  
FROM THE AMERICAN PEOPLE

# ASSOCIATING PRESENCE WITH IMPACT

Compare key PBS indicators from 2012 to 2015 to see if values have:

- Improved
- Not changed (remained more or less the same)
- Worsened
- Have contradicting values (ex. Poverty Prevalence and Per-capita Expenditures reducing)

Associate the variable to see relationship (flag) between PRESENCE and IMPACT at district level



**ABOVE AVERAGE USAID DISTRICT PRESENCE AND IMPROVING IMPACT INDICATORS**



**BELOW AVERAGE USAID DISTRICT PRESENCE AND IMPROVING IMPACT INDICATORS**



**BELOW AVERAGE USAID DISTRICT PRESENCE AND CONTRADICTING IMPACT INDICATORS**



**ABOVE AVERAGE USAID DISTRICT PRESENCE AND CONTRADICTING IMPACT INDICATORS**



**BELOW AVERAGE USAID DISTRICT PRESENCE AND REGRESSING IMPACT INDICATORS**



**ABOVE AVERAGE USAID DISTRICT PRESENCE AND REGRESSING IMPACT INDICATORS**





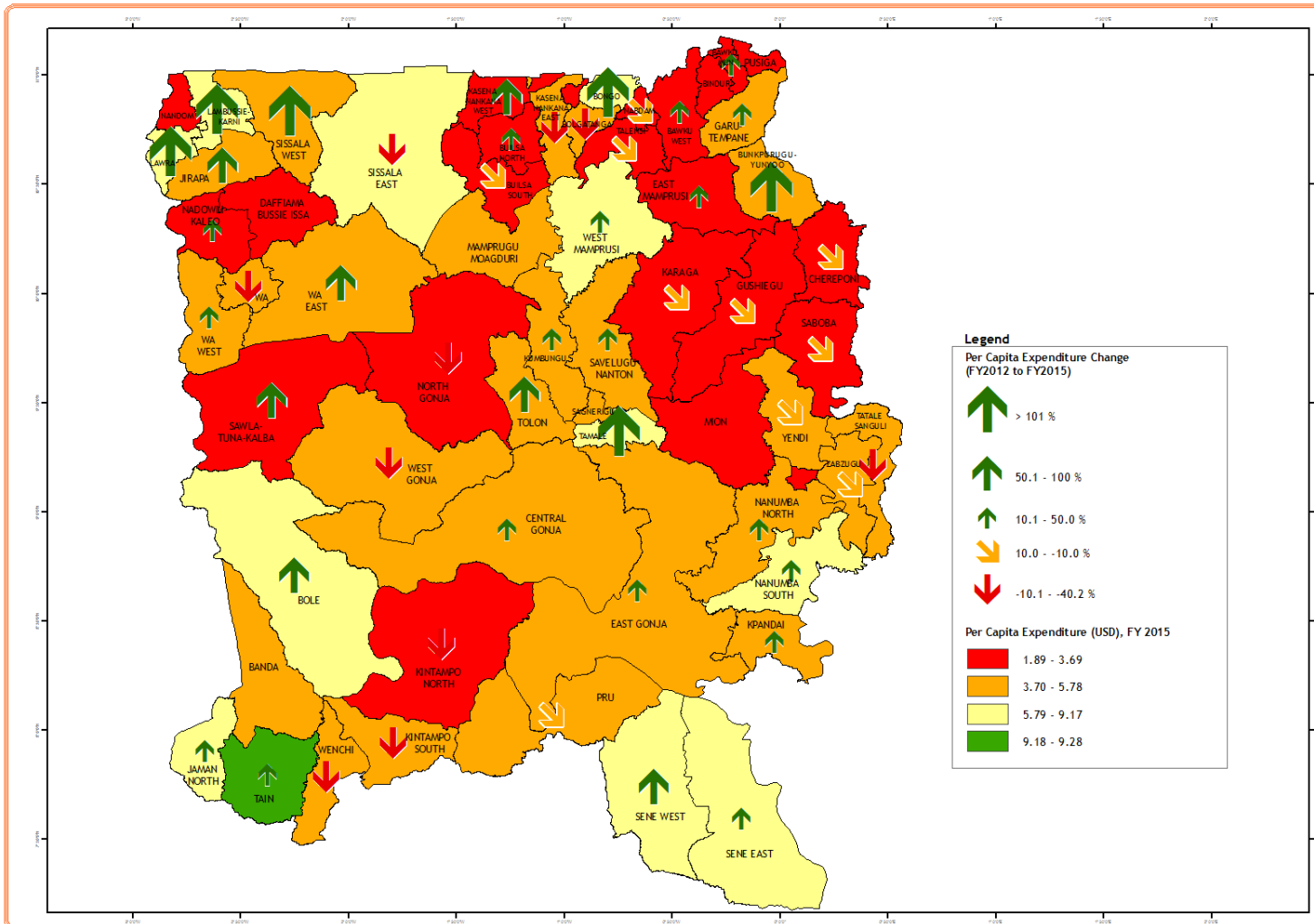
**USAID**  
FROM THE AMERICAN PEOPLE

# DISTRICT LEVEL DATA DRILL



**USAID**  
FROM THE AMERICAN PEOPLE

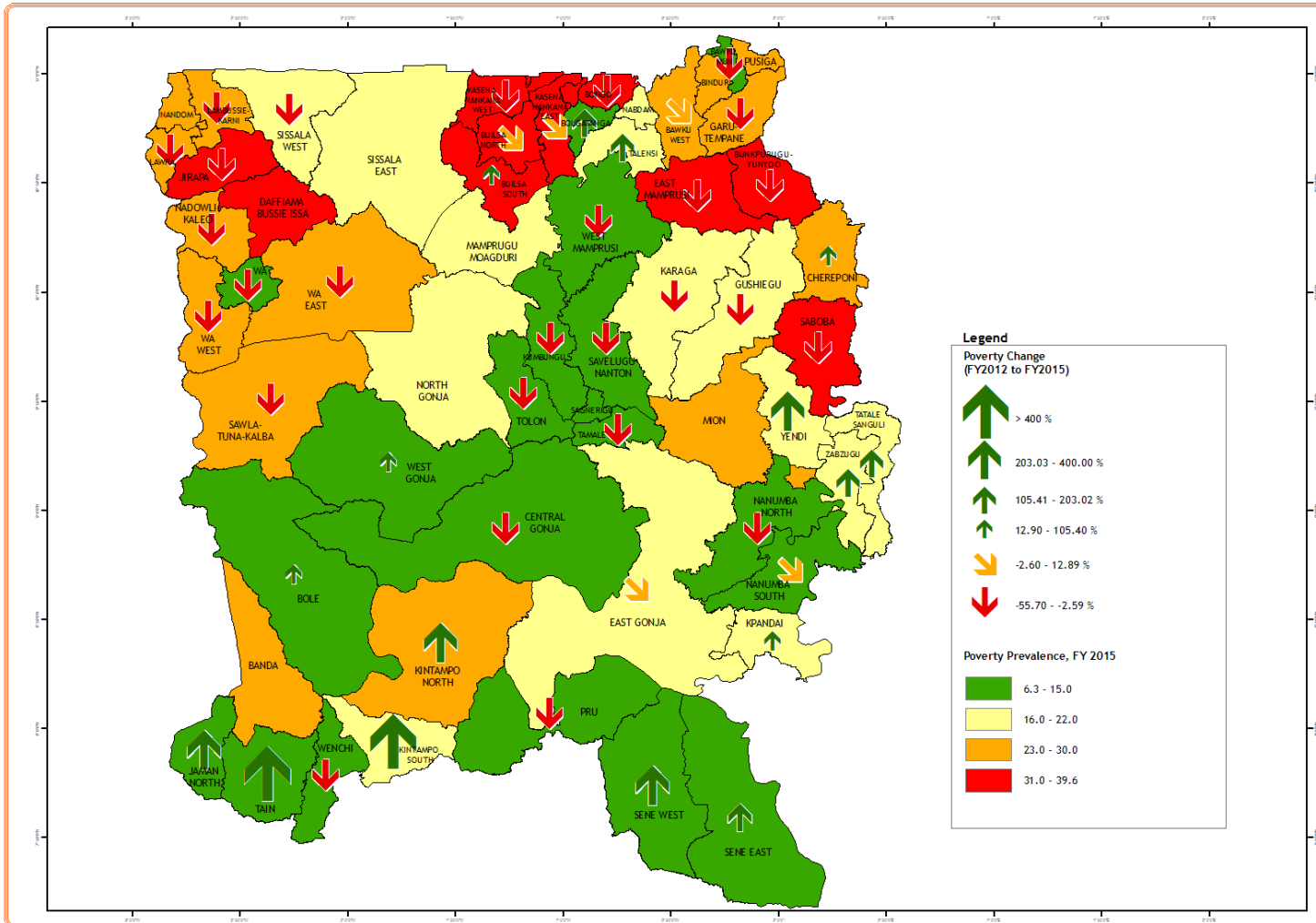
# IMPACT INDICATOR I- PER CAPITA EXPENDITURES BY DISTRICT and Change 2012-2015, in %





**USAID**  
FROM THE AMERICAN PEOPLE

# IMPACT INDICATOR II- PREVALENCE OF POVERTY BY DISTRICT and Change 2012-2015, in %





## SUMMARY OF FINDINGS

- Increase↑ of Per Capita Expenditures in 34 districts
- Decrease↓ of Per Capita expenditures in 15 districts
- No comparison available in 7 districts
- Decrease↓ in poverty in 30 districts
- Increase↑ in poverty in 18 districts
- No comparison available in 8 districts

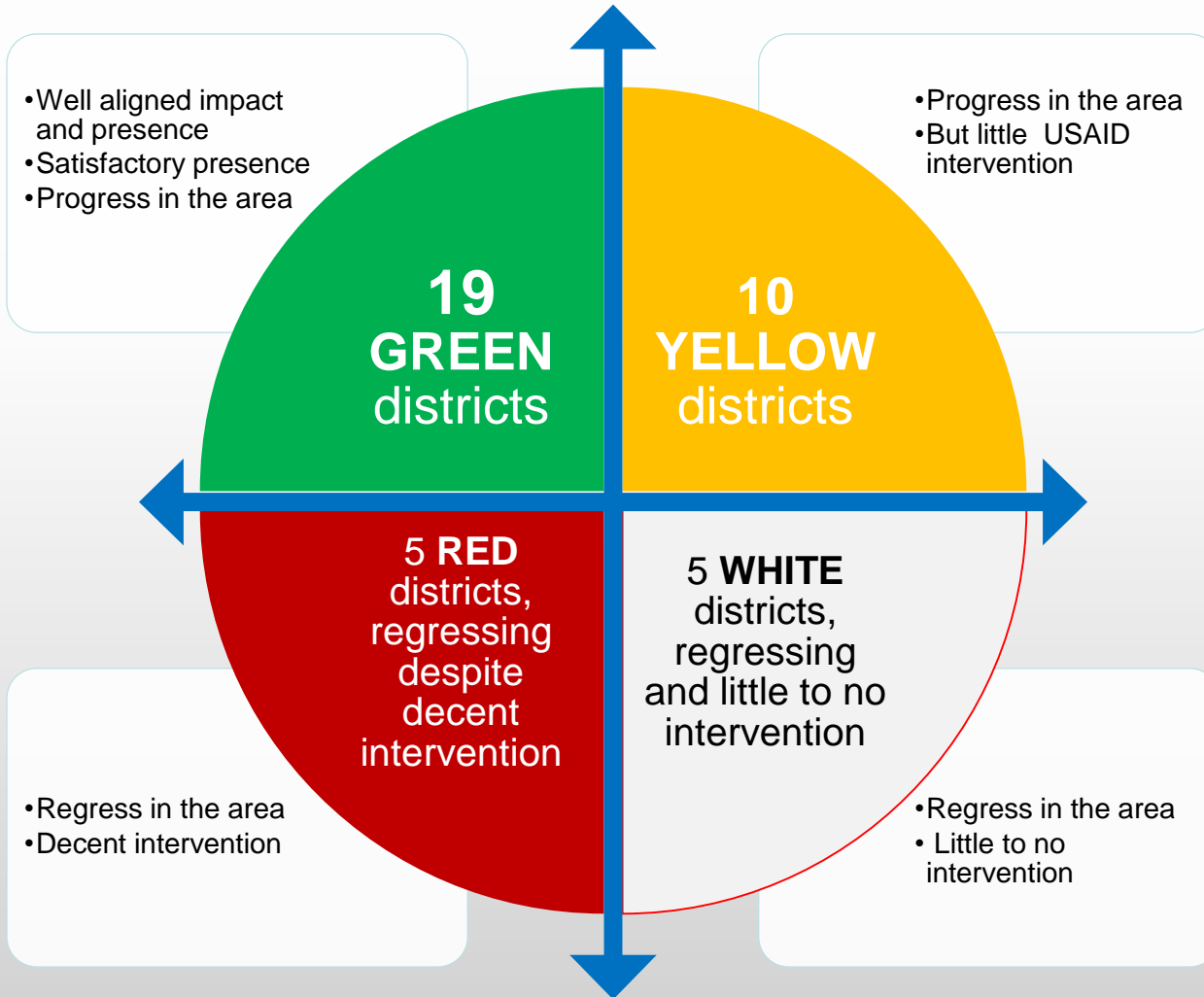
Does this change combine  
with the presence score of  
the district?





**USAID**  
FROM THE AMERICAN PEOPLE

## SUMMARY OF FINDINGS



No flag for  
8 district

8 Blue  
Districts



**USAID**  
FROM THE AMERICAN PEOPLE

## DISCUSSION QUESTIONS

- How can these insights be integrated in planning and decision making at the District level?
- What accounts for some districts regressing in outcomes (poverty and incomes) despite high USAID presence?
- Would these insights lead to realignment of project implementation in particularly the **RED FLAGGED DISTRICTS**?



**USAID**  
FROM THE AMERICAN PEOPLE

**THANK YOU**