

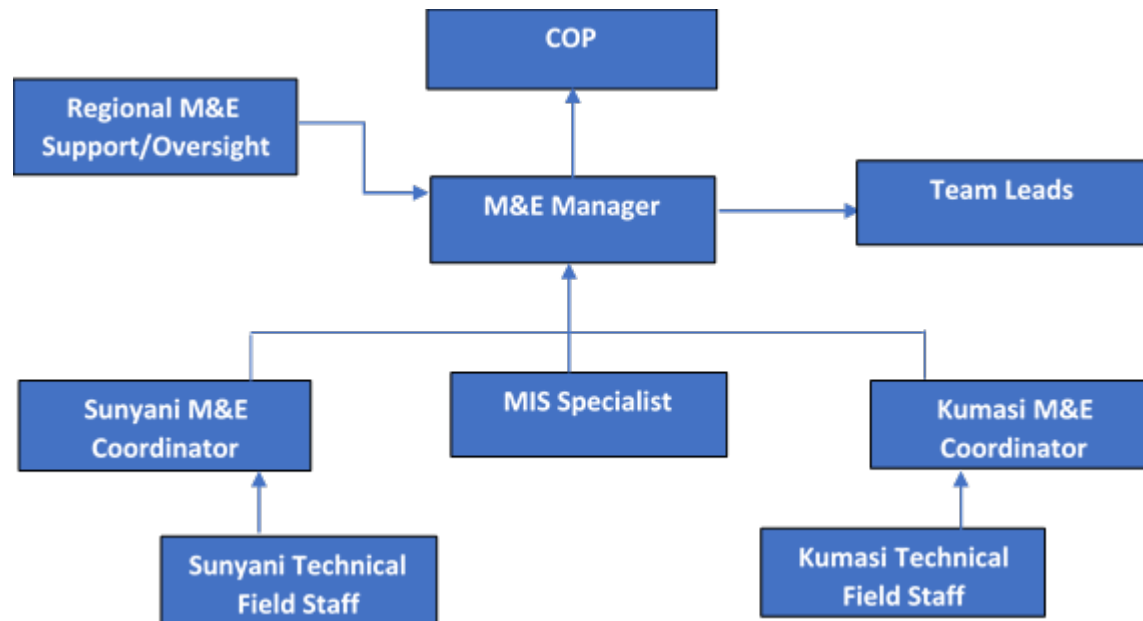
ACDI/VOCA

Ghana Poultry Project – GPP
M&E System

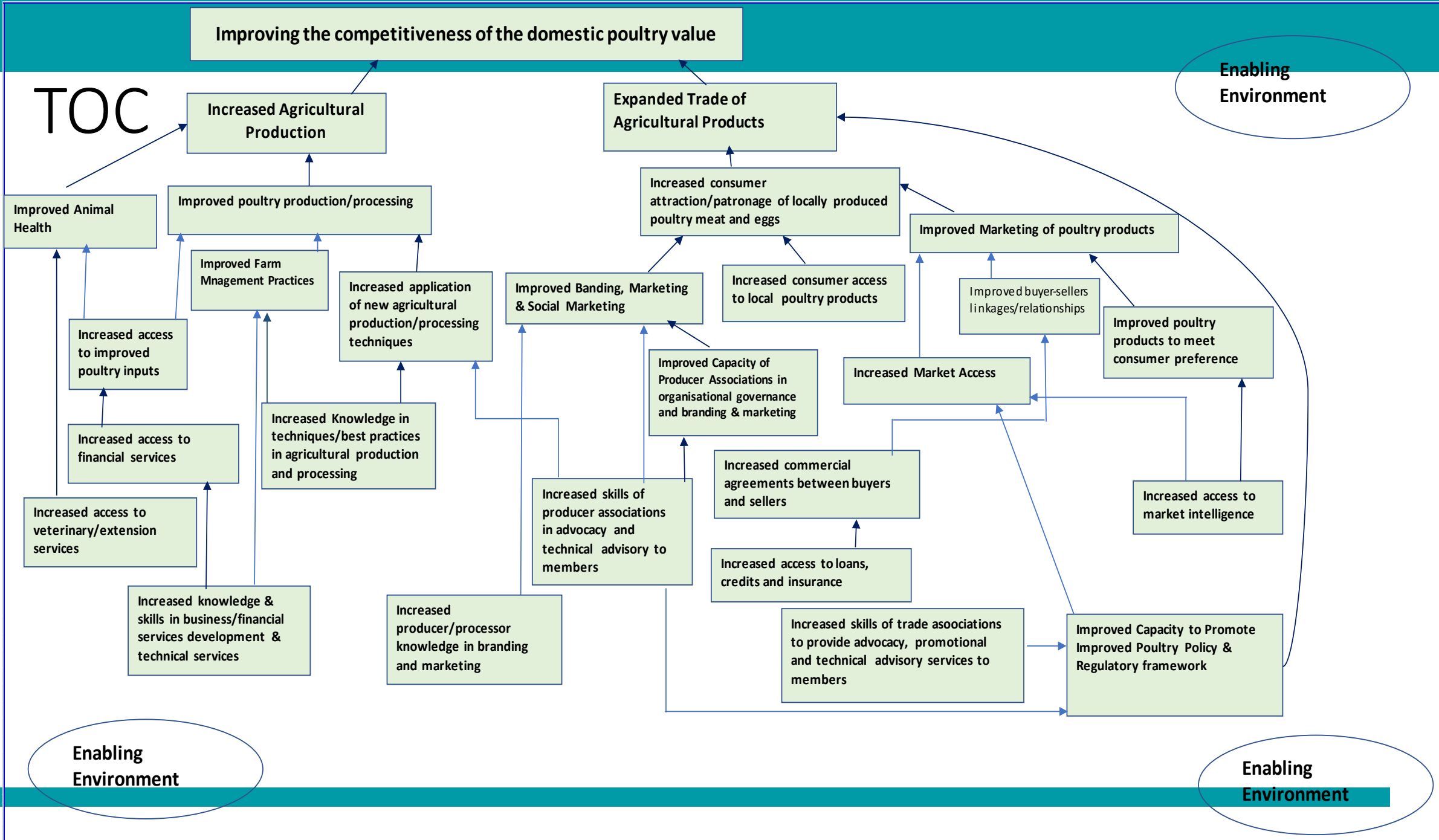
USDA Poultry Projects M&E Working Group Meeting
June 26, 2018, METSS II Conference Room, Accra

M&E Structure & Human Capacity

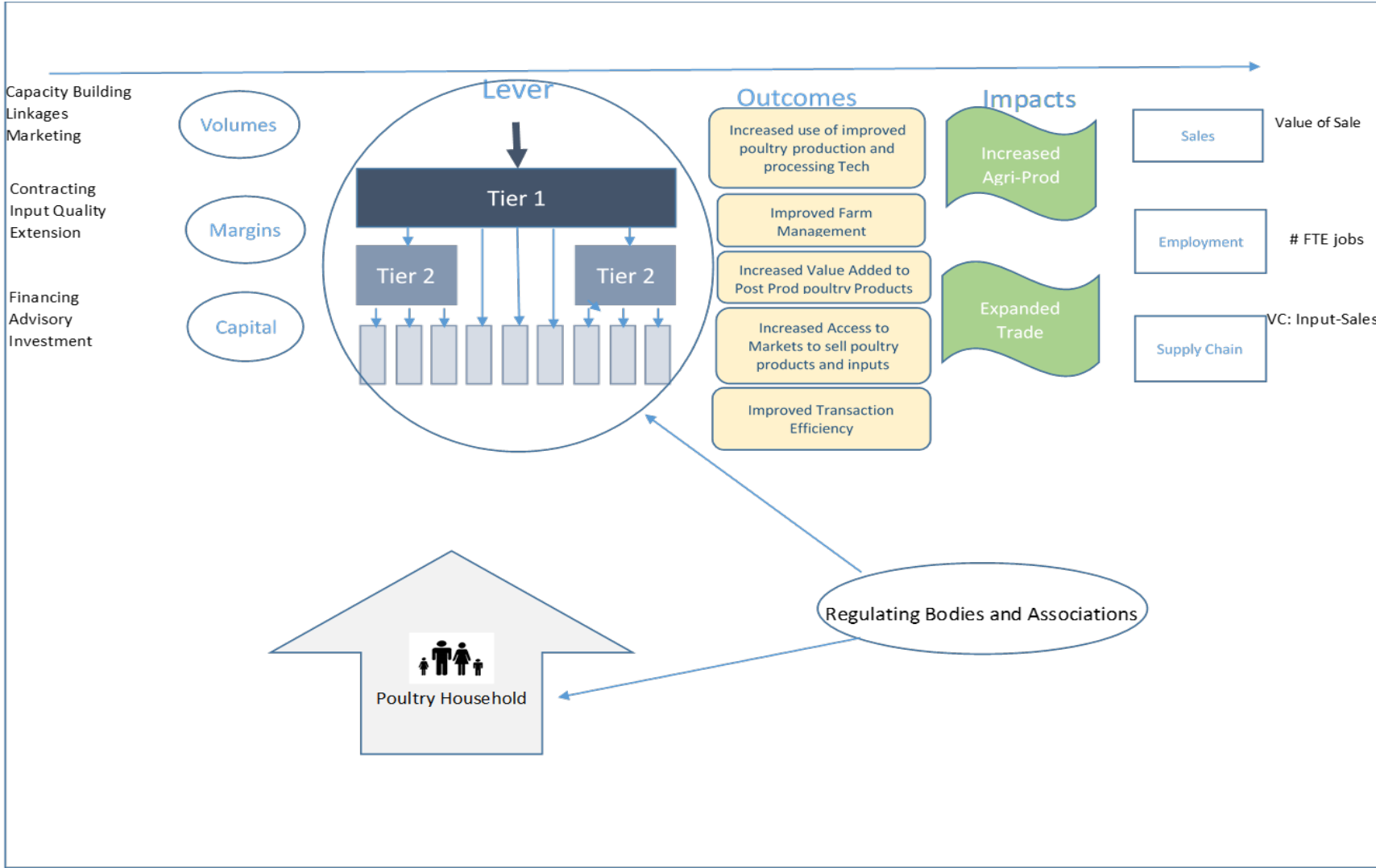
M&E Team
Our Perspective.....Everyone is M&E



Person	Office	Responsibility
Chief of Party	Accra	Overseas the whole GPP project.
Regional M&E specialist	HQ	<ul style="list-style-type: none"> Provides guidance and reflection on data quality and USDA's M&E best practices. Reviews key M&E strategies and tools Conducts capacity building exercises, as needed Conducts DQA
M&E Manager	Accra	<ul style="list-style-type: none"> Guides the technical direction of the M&E approach and strategy responsible for all communication and reporting needs for the program In charge of program monitoring and evaluation, and reporting Conducts capacity building exercises, as needed Prepares semi-annual reports Coordinate all program evaluations Supervise the design of and validates the M&E tools of the project
MIS Specialist	Accra	<ul style="list-style-type: none"> Manages all 3 databases of GPP Build the capacity of the team on the database utilization Routinely checks the quality of the data entered in the database Assures the quality, maintenance and update of the databases software and hardware Troubleshooting and helpdesk Design and ensures the automation of the calculation of the project indicators values Conduct data analysis as needed
M&E Coordinator	Regional Offices	<ul style="list-style-type: none"> Assists with data entry, verification and upload to the project's database system. Directs the technical team on streamlining activities with the project's indicators.
Communication Specialist	Accra	<ul style="list-style-type: none"> Produces all communications and communication tools shared within and outside of the project Support the learning activities Finalize narrative report for final review



Theory of Change Diagram



Assumptions:

- Government Supports Domestic Poultry Sector by ensuring an Enabling Environment
- Improved animal productivity

GOAL: to improve the competitiveness of the domestic poultry value chain

Support Preconditions 1:

Improved business capacity, Improved business & market linkages, Improved management of local production

Support Preconditions 2:

Support marketing campaigns, Increased demand for domestic poultry & eggs, Increased market share of expanding end markets

Routine Project Monitoring

Guided by MELP, PMP, Data Management Plan plus other project documents

M&E Unit ensures alignment of project activities to indicators

M&E coordinators monitor on-going activities (*e.g.: trainings, demonstrations, forums etc....*)

Spot checks by M&E coordinators (*improved technologies &/or management practices,)*

12 Outcome indicators	Baseline, midterm, final
5 Outcome indicators	Collected annually, reported annually
24 Output or Outcome indicators	Collected quarterly, reported semi annually
27 Output indicators	Throughout project implementation

ACTIVITIES

Trainings/Workshops
Financial Services
Technical Assistance
Demonstrations
Grants
Policy/Advocacy
Linkages
(Commercial agreements)
Trade missions
Forums

ACTORS (Source of data)

1. Poultry Producer
2. Cereal Aggregator/Commercial Farmer
3. Soy Cake Supplier
4. Feed Processors/Suppliers
5. Veterinary Operator/Vaccine Supplier
6. Financial Service Provider
7. Industry Associations
8. End markets

Studies, Surveys, Evaluations

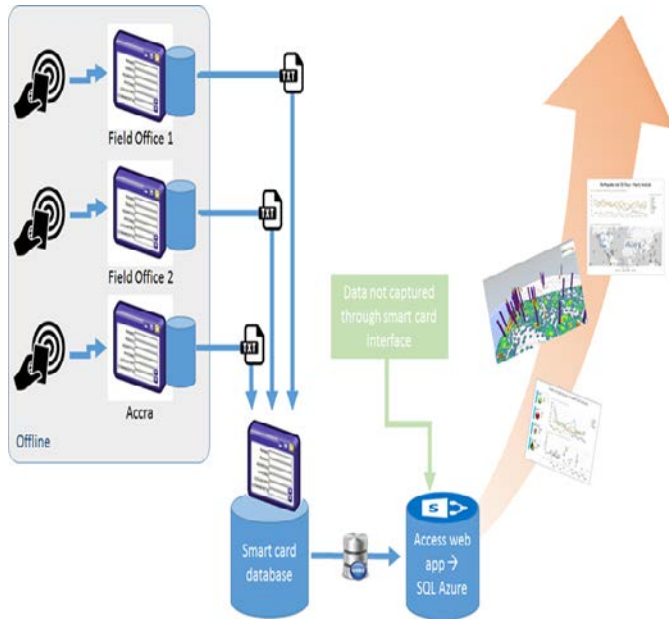
Consultants are procured to conduct

- Specific Studies for project learning (e.g.: meat market study, veterinary laboratory assessments etc.)
- Evaluations (e.g. baseline, mid-terms etc.)

In-house expertise is employed for

- Annual Surveys

Management Information System (MIS)

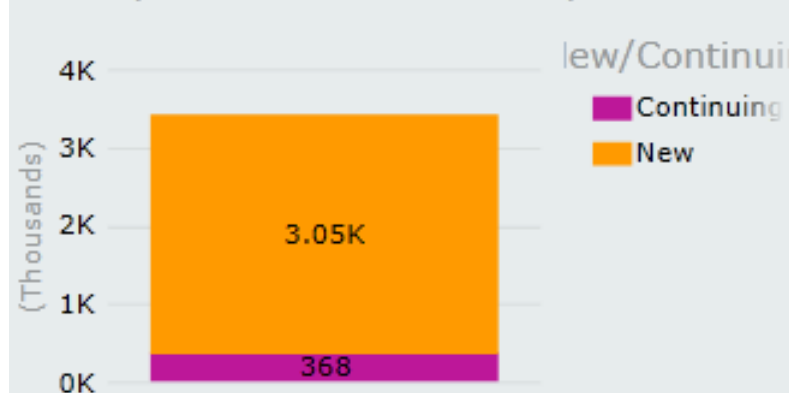


- A **multilayered centralized** monitoring system
- GPP operates 2 sub offices (Kumasi & Sunyani) in addition to the Accra Office
- A web-based database platform developed for data collection, analysis and storage
- Data Capture is through an interface installed for all tech staff
- Analysis done at field office level and Head Office level
- Consolidated data stored on SharePoint is accessible to M&E staff for further analysis
- Ready made Dashboards are made available on SharePoint for all staff and other interested individuals within the organisation

Ensuring data quality with databases

- Only two persons have full control of the three databases
- All databases stay password protected
- DCI is synchronized every week within each regional office and with the Accra office
- MIS Specialist goes through the log files and report to the Regional systems and Technology Director any potential abnormality noticed
- All DCI data from the field offices are exported every Friday and saved on the local server at the Accra office to serve as back up at the head office level

No. of producers - FY18 SA1 by New/Continu



Short term Agricultural sector Productivity

New/Continuing	Region	Fem...	Male	Total
Continuing	ASHANTI	40	150	190
	BRONG AHAFO	21	102	123
	GREATER ACCRA	11	44	55
	Total	72	296	368
New	ASHANTI	583	1059	1642
	BRONG AHAFO	344	570	914
	GREATER ACCRA	252	246	498
	Total	1179	1875	3054
Total		1251	2171	3422



Data Capture Interface

Ghana Poultry Program - Data Capture Interface [???

File Reports Data Options Help

Poultry Business Poultry Employee Grain Farmer Veterinarian Financial Service Provider End Market Participant Issue ID Card Attend Workshop Export Data Import Data GPP Options Training Schedule Settings

Poultry Business Profile (New Registration)

Page 2 of 11 - General Information

Company ID:

Company Name:

Year Established:

Registered Address:

Contact Person (1)

*Name: Position:

Phone: Email:

Contact Person (2)

Name: Position:

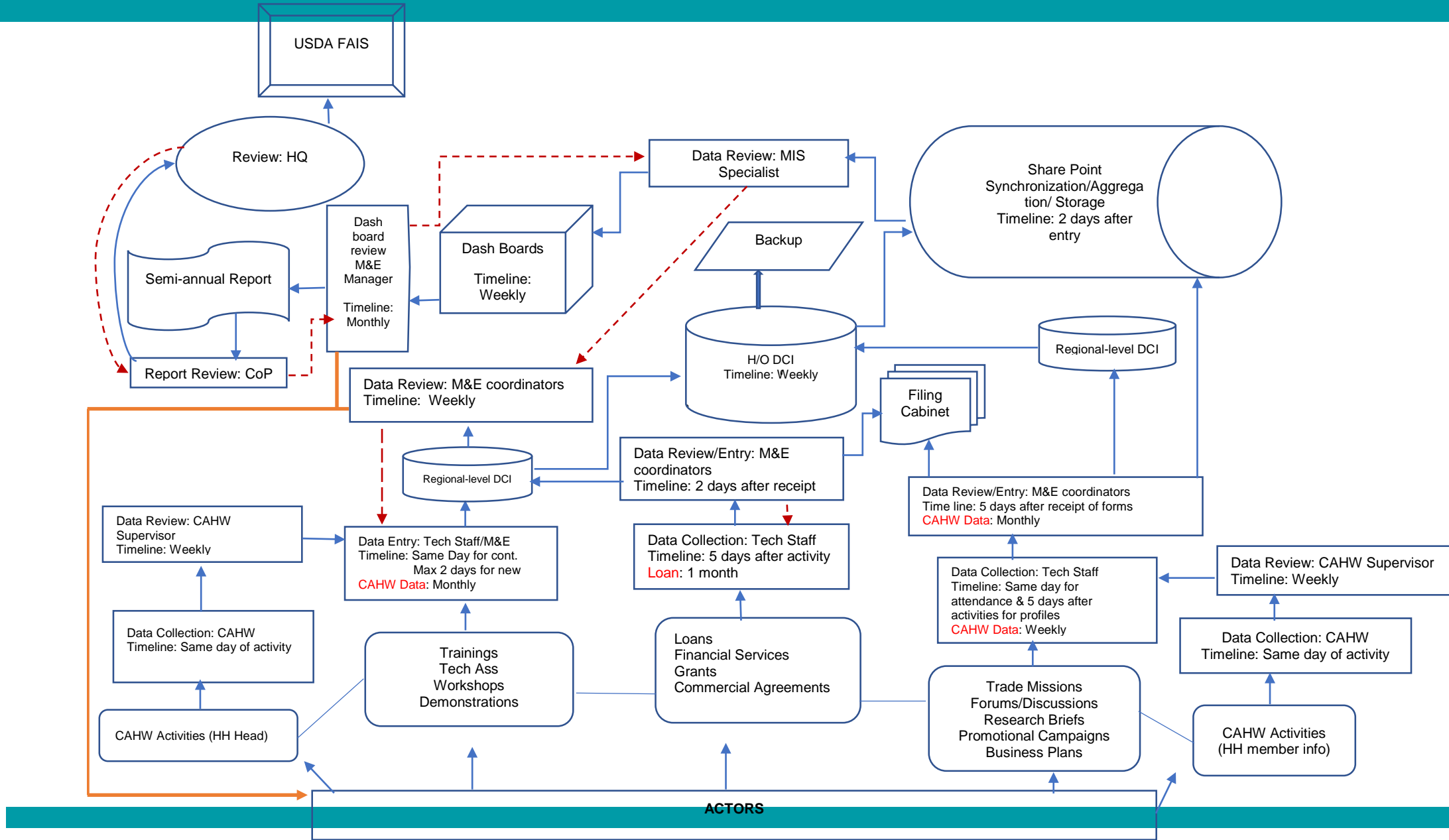
Phone: Email:

Possible missing/blank entries found on page 1

Application Status:

Prev Next Reset Save & New Registration Save & Close Close

GPP - DATA FLOW CHART



Supportive Supervision and Data Auditing

- ❑ Field visits to substantiate data claims. Substantiating data claims by checking records in the field, talking to field staff and talking to beneficiaries
- ❑ Annual internal data quality assessments are conducted by the ACDI/VOCA regional office
- ❑ An assessment of the validity, reliability and completeness of recorded data (is the data accurate/ honest; consistently collected in a routine and reliable manner, and are the data complete (up to date, comprehensive and results are on target)
- ❑ A comparison of the database figures against supporting records

Data Dissemination and Use

Data Dissemination

- Semiannual Report to USDA
- Bi-weekly updates to our HQ
- Bi-monthly publication of news letters
- Research briefs
- Annual Reflection/Learning Meeting

Data Use

- Reporting to Donor
- Project learning
- Project decision making (adaptation)
- Feedback to beneficiaries

Challenges with the Systems

- ❑ Data for some activities take longer time to be collected (*e.g. loans, CAHW act*)
- ❑ Depending on third parties for data collection may compromise data quality (*annual surveys*)
- ❑ Speed of internet interferes with access to SharePoint applications (*e.g. Dashboard*)
- ❑ Fatigue of beneficiaries during data collection

We envision a world in which people are empowered to succeed in the global economy.

www.acdivoca.org www.asintl.org