

METSS's support to **EGO IPs**

Collins Osae
M&E Team Lead
cosae@metssghana.org

November 7, 2017

METSS Mandate (per USAID/USDA PASA)... 1/2

- Serve as a focal point for collating data on USAID project indicators:
 - Support AORs/CORs and implementing partners with audit-ready M&E plans
 - Define indicators and methods for collecting those indicators,
 - Conduct data quality assessments and
 - Support implementing partners to record data into systems like the Feed the Future Monitoring System (FTFMS).

METSS Mandate (per USAID/USDA PASA)...2/2

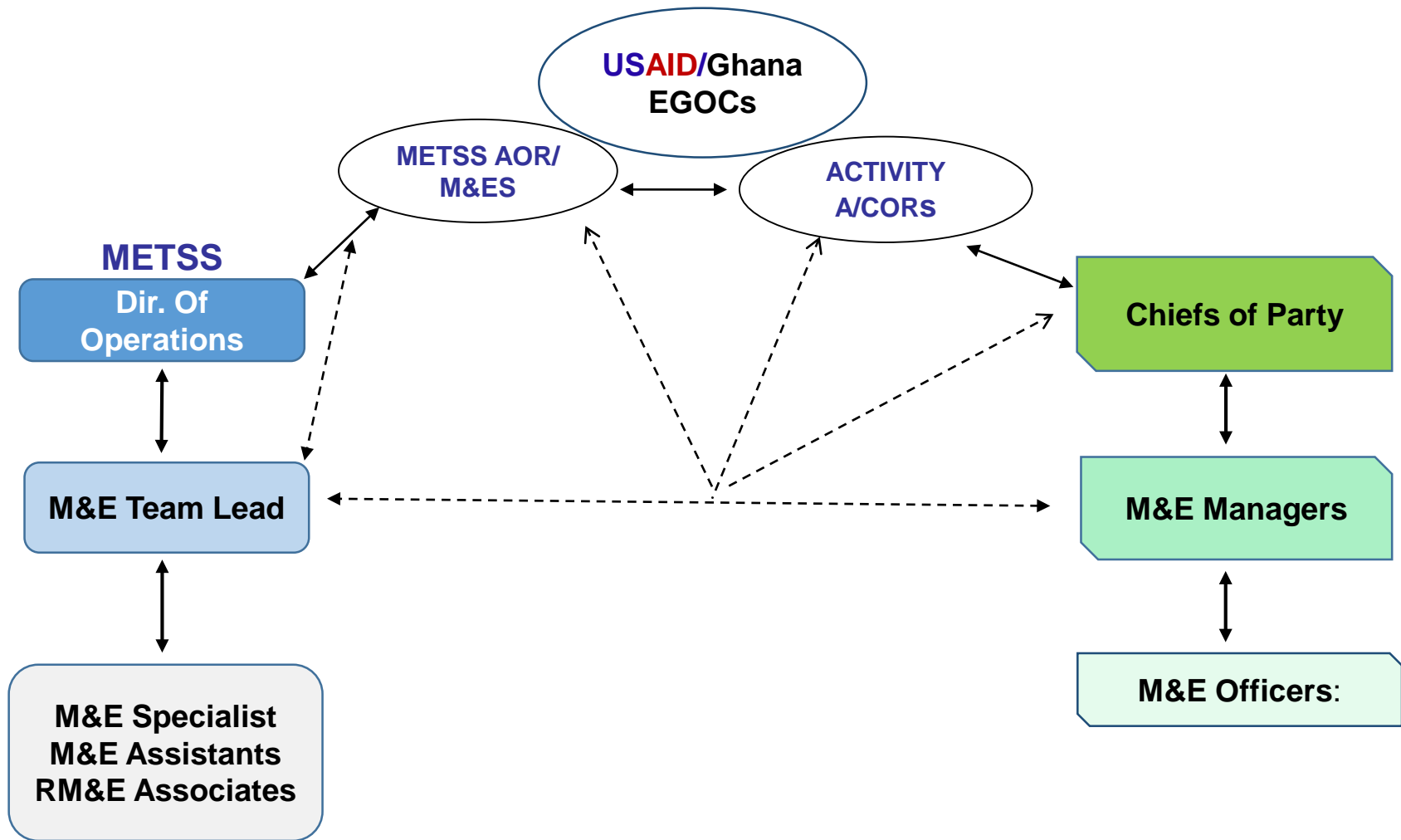
- Work closely with the EG Office M&E expert on:
 - Developing and maintaining timelines for reporting,
 - Data quality assessments (DQAs), and site visits.
- Work closely with AORs/CORs to:
 - Determine when project evaluations need to be conducted and
 - Support them in evaluation design,
 - Draft terms of reference for evaluations,
 - Recruit and contract evaluation teams,
 - Set up meetings and logistical arrangements.

Examples of METSS M&E Support in FY 2017...

1. RING Beneficiary Based Survey
2. SPRING Endline Beneficiary Based Survey
3. M&E Plan Review – PICA, SFMP
4. NGGA Results Framework & Baseline Survey Review
5. Limited Data Quality Assessments
6. Annual IPs Meeting
7. Training of Energy Sector Agencies M&E PoCs
8. FTFMS Reporting Support

If you need METSS support:

- Send request via email to M&E Team Lead
- M&E Team Lead will review your request with DoP
- A PoC will be assigned to you



Dir. Of Operations



M&E Team Lead



M&E Specialist



M&E Assistants

RM&E Associates

**USAID/
Ghana**

Chiefs of Party



M&E Managers



M&E Officers:

Additional Services:

- Knowledge Management – Data Visualization
- Geographic Information System – Needs assessment to be conducted
- Database Development