

Overview of the Ghanalinks Knowledge Management Portal

Presented at the Communications Meeting, Fiesta Royal
Hotel, Accra
June 28 - 30, 2016

USAID METSS KML&C Team



USAID
FROM THE AMERICAN PEOPLE

GHANA



KANSAS STATE
UNIVERSITY
Department of Agricultural Economics

Presentation Outline

1. Background/Objective
2. Overview of the Ghanalinks KM Portal
3. How to Support the Portal
4. Getting Started - Registration Process
5. A Walk Through the Portal



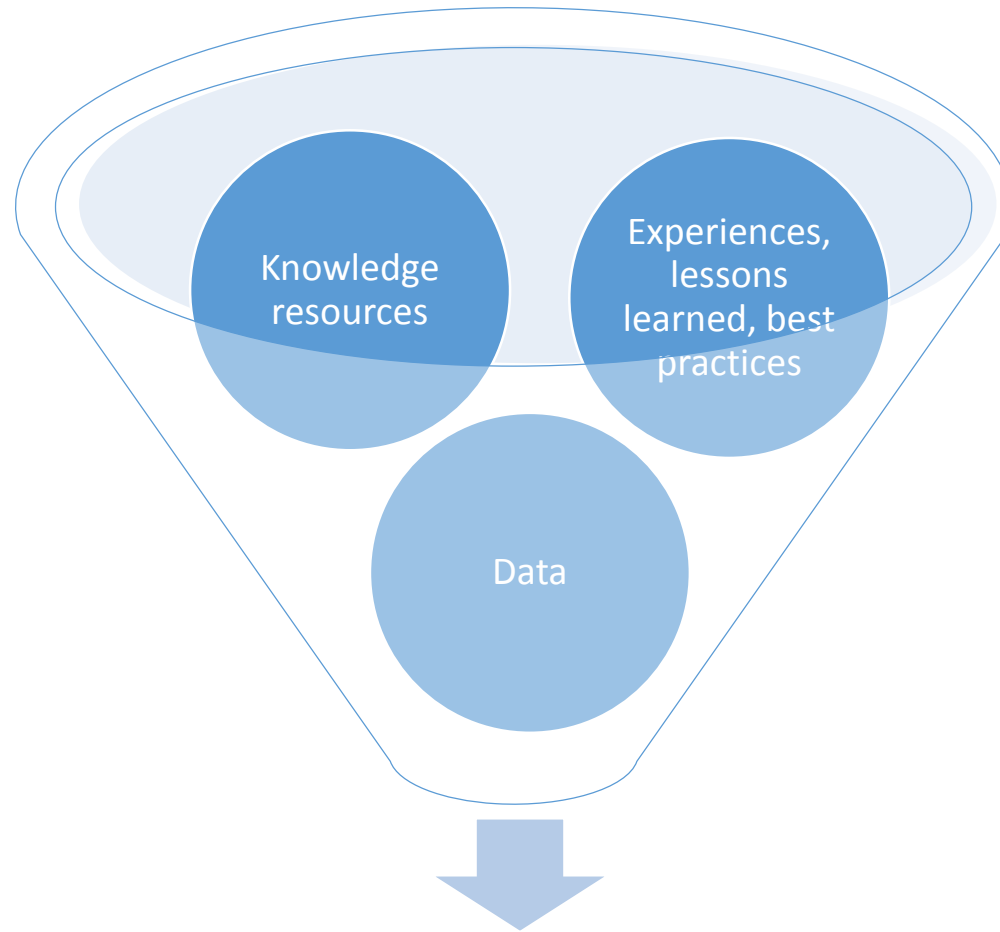
USAID | **GHANA**
FROM THE AMERICAN PEOPLE



KANSAS STATE
UNIVERSITY
Department of Agricultural Economics

Background/Objective

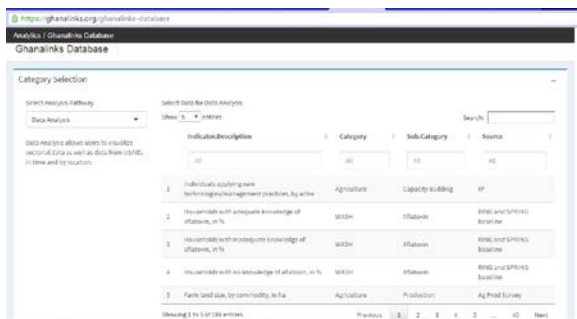
**Need for a Centralized
Platform for USAID
Ghana, Implementing
Partners and
Stakeholders**



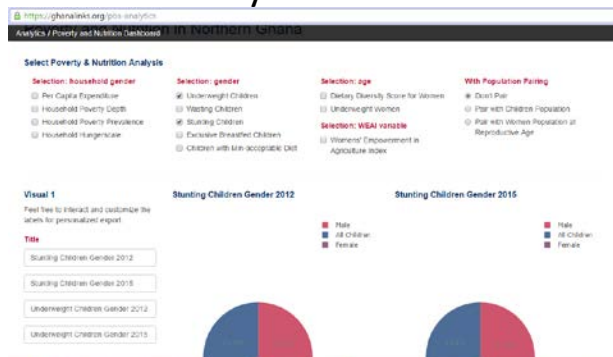
Effective Knowledge Sharing, Results, Collaboration, Learning,
Decision Making – Avoid Duplication

Overview of the Ghanalinks Knowledge Management Portal

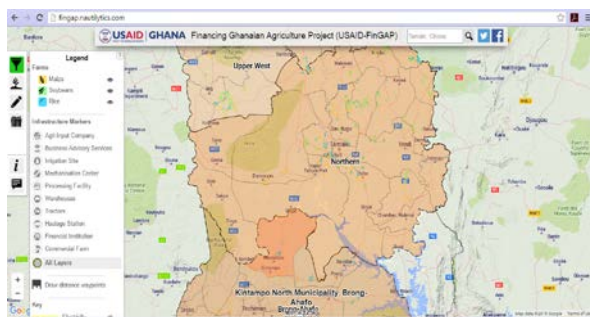
Ghanalinks Database



Poverty & Nutrition



FinGAP Investment tool

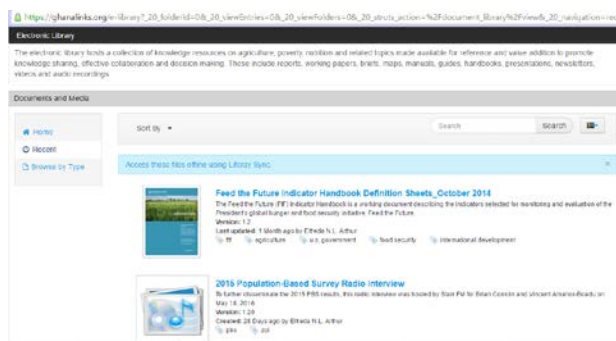


Help?

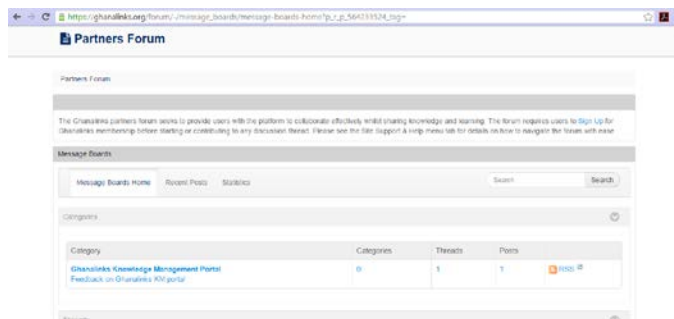
Welcome

Analytics

Electronic Library

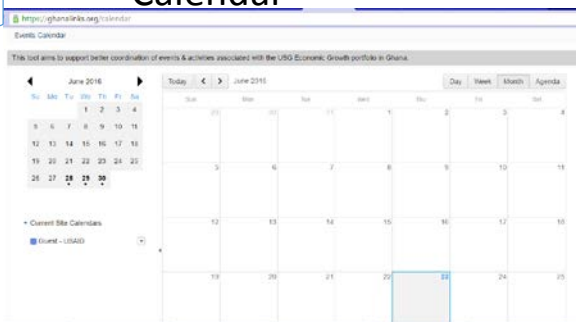


Partners Forum

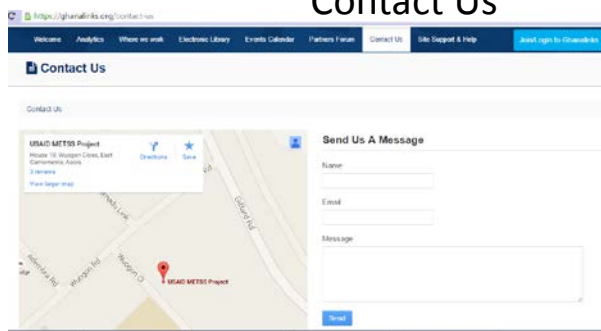


Ghanalinks Knowledge Management Portal

Calendar

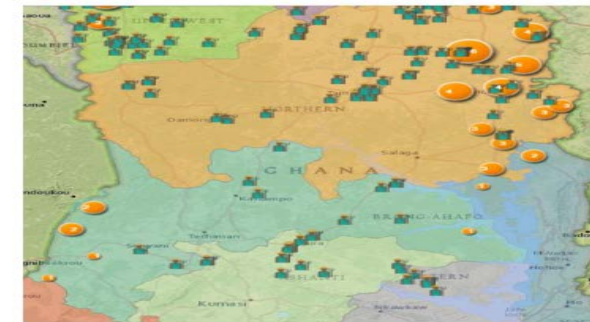


Contact Us

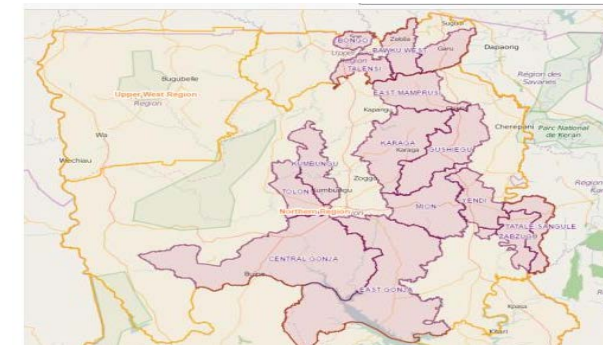


Where we work

Feed the Future Activity Map



SRING Target Communities Map



RING Target Communities Map



How to Support the Ghanalinks Portal

1. Register and use the different tools on the portal.
2. Provide data for the Ghanalinks database and the 'Feed the Future Activity Map' in the required format.
3. Provide knowledge resources including reports, research articles, manuals, etc for uploads to the electronic library.
4. Participate in discussions held on the forum.
5. Specify events in the calendar
6. Provide feedback for better results.



USAID | **GHANA**
FROM THE AMERICAN PEOPLE



KANSAS STATE
UNIVERSITY
Department of Agricultural Economics

Getting Started - Registration Process



2 Register

FOCUS (For now)

USAID and
Implementing
Partners

4

Sign in using given **PASSWORD**

5



Ready to USE!!

Help? Check User Guides.

Required - Name, Email &
Organization/Project

3

Check **Inbox, Junk, Spam** for **Approval Notification Email**

Dear Elff Artt,

Welcome to Ghanalinks (Share, Learn, Use)!

Your user account has been created and approved.
Visit <http://ghanalinks.org> using elfreda.arthur@gmail.com and the temporary password **Ea39WT** to log in.

After logging in with the temporary password, you will be prompted to create a new preferred one. Your account details can be edited under "My Account".

We hope you enjoy this experience.

Sincerely,
Ghanalinks Administrators
info@ghanalinks.org
<http://ghanalinks.org>



1

FOCUS

USAID and
Implementing
Partners

Once it's online, it's available to **ALL** who find the site whilst browsing



Users

Let's Register!



<https://ghanalinks.org>

A Walk Through the Portal



<https://ghanalinks.org>

Help? Check User Guides.

[Getting Started Screen shots](#)

Feed the Future Activity Map

Questions and Comments



Use the Ghanalinks Contact page or ghanalinks@metssghana.org to reach the team with feedback.

Thank you



USAID | **GHANA**
FROM THE AMERICAN PEOPLE



KANSAS STATE UNIVERSITY
Department of Agricultural Economics